

OUR CORE TECHNOLOGY
YOUR GREAT FUTURE



USER MANUAL

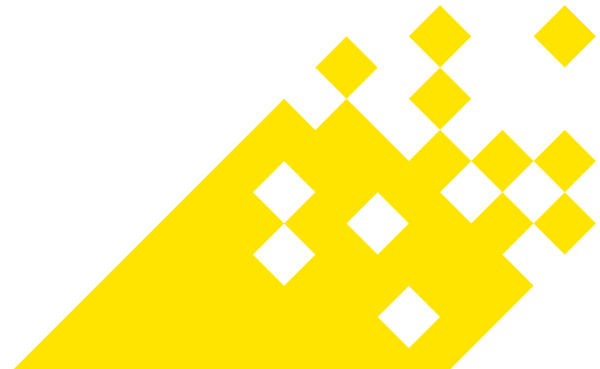
B40 Series (50 m m)
Handheld Inkjet Printer

Zhuhai Bentsai Electronics Co.,Ltd.

Web:www.bentsai.com

Add:2/F, Block B, Factory Building 1,
115 Huawei Road, Xiangzhou District, Zhuhai

TFG-0013-01



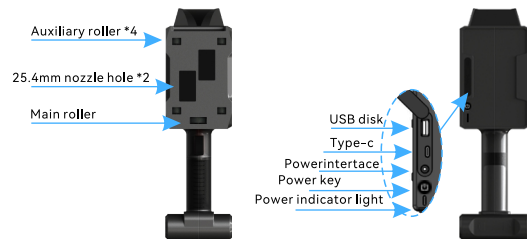
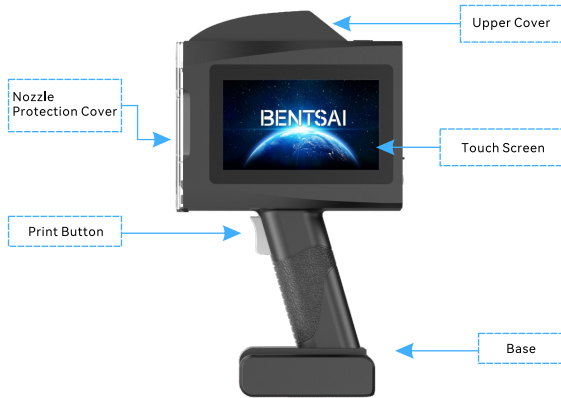
CONTENTS

Contents

Parts Composition	1
Technical Specifications.....	2
Features.....	3
Precautions	3
Operation Procedures	3
Main Menu	4
Troubleshooting	9
Packing List	10
Warranty Instructions	11
Warranty Card	12



Parts Composition



Machine diagram

Technical Specifications

Product Model	B40
Print Height	2.5mm-50mm (1-20 lines)
Optional Ink Cartridges	Water based (42ml*2): Black, Cyan, Magenta, Yellow Solvent Based (42ml*2): Black, Cyan, Magenta, Yellow, White, Green
Printing Technology	Thermal Inkjet (TU)
Ink Throw Distance	2-5mm(Distance between nozzle plate and print object)
Operation System	Linux based
System Language	Chinese/ English/ German/ Arabic/ Spanish/ Russian/ Japanese/ Korean/ Italian/ Portuguese / French/ Hindi/ Thai/ Vietnamese/ Persian/ Turkish/ Chinese Traditional/ Indonesian/ Slovenian / Serbo-Croatian/ Czech/ Bulgarian/ Romanian/ Polish/ Greek/ Hungarian/ Ukrainian/ Slovak / Burmese (Available languages vary for different regions)
Display	5" High Definition Touch Screen
Status Alarm	Green: Ready Blue: Printing Red: Alarm
Print Applications	Text, Numbers, Images, Logos, 2Dcodes, Barcodes, Dates, Counter, Database etc.
Printable Materials	Waterbased inks for Porous and semi porous substrates: Paper/ Corrugated box/ Wooden/ Fiberboard/ Cotton etc. Solvent based inks for semi porous and non porous substrates: Plastic/ Glass/ Metal plates/ Alu foils/ Cables etc.
Barcode Type	Code128, Code39, EAN8, EAN13, UPCA, ITF(2of5)
2D code Type	DateMatrix, QR codes
Font Type	True type fonts, Dotmatrix fonts
Resolution	300dpi
Max. Print Size	50mm*2000mm
Max. Pixel Size	Standard 566px*12800px
Print speed	15m/ min
Grey level	1-10 Adjustable
External Ports	USB, Type-C, Power adapter, Photoelectric Sensor, Encoder, Beacon
Power Adapter	Input: AC100-240V, 50/60Hz Output: DC9.3V-5A
Working Environment Recommended	Working Temperature: 5-35°C Storage Temperature: 0-45°C Relative Humidity: 10%-80%
Battery	6000mAh
Standby Time	≥8 hours (working when screen off)
Memory Size	4 Gigabytes
Net Weight	860g
Packaging Weight	3.5kg(Aluminum case)
Product Dimension	220*110*75mm
Packaging Dimension	378*178*270mm

Features

01. Max Print Height 50mm
02. Windows Style User Interface
03. Large Capacity Rechargeable Removable Battery
04. 300 dpi High Resolution Printing
05. 5-inch Color HD Touch Screen

Operation Process

- ① **Ink cartridge installation:** Press the upper cover opening button to open the upper cover, insert the ink cartridge into the machine, and close the upper cover.
- ② **Printing procedure:** Press the power switch to start the machine → [Print Edit] → Select the content type → Edit the content → Click [Print] → Remove the protective cover of the nozzle → Lay the main and auxiliary rollers to the product surface → Hold down the print button and slide at a constant speed after hearing the "beep" sound to print → Print job done.
- ③ **Printer close procedure:** Click the [Cancel] button when printing job finished. Recap the nozzle protection cover.

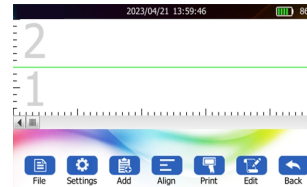
Precautions

- ⚠ Do not use non-genuine ink cartridges.
- ⚠ In case of any abnormality of the machine, see **Troubleshooting**. Do not disassemble the machine without permission.
- ⚠ Do not remove the smart chip stuck on the cartridge without permission, otherwise, the machine may not be used properly.
- ⚠ When cleaning the machine, keep it away from water and do not use chemical solvents for cleaning.
- ⚠ After printing, close the protection cover of the nozzle in a timely manner to prevent ink nozzles from clogging.
- ⚠ Do not place the machine in a humid environment for a long time, Otherwise the circuit will get damp.

Main Menu



Print Edit

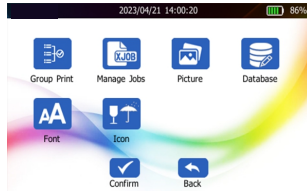


ⓘ Edit the print content as needed.

- File: Create, Open, Save, Save as your print jobs .
- Settings: Set printing parameters .
- Add: Add Text, QR codes, Barcodes, Images, Time, Serial Numbers, Database, Graphics and Icons as needed.
- Align: Adjust positions of the print contents.
- Print: Click print to start the current printing job.
- Edit: Edit the selected content.
- Back: Return to previous menu.



Print Management



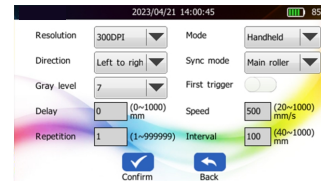
- ! Manage file groups, jobs, pictures, databases, fonts, icons.
- Group printing: Add needed files to the print list and print them in sequence.
- Job management: Delete or rename job files.
- Image, database, font and icon management: Delete or rename documents.

System Settings



- Print settings: Set printing parameters.
- Prompt tone settings: Set printer's working prompt tone.
- Screen settings: Set screen brightness.
- Power settings: Standby, shutdown time settings.
- Cartridge Settings: Ink parameters setting to set the ink parameters including pulse and voltage. Cartridge parameters setting to adjust the two print heads stitching of the cartridges.
- Time settings: Set local system time.
- Language setting: Set local system language.
- Restore factory settings: Restore the default settings of system parameters.

Print Settings



- ! Edit the printer parameters.
- Printing resolution: 300dpi.
- Printing mode: Handheld, photoelectric, continuous mode.
- Printing direction: From left to right, from right to left.
- Gray scale: 1-10 level. Different materials use different gray levels, and gray levels can be selected according to the actual material.
- Synchronous mode: Hand-held mode is run by printer's built-in main roller. Photoelectric Mode can be connected with external synchronous wheel. Continuous Mode can be run by the printer's main roller or external synchronous wheel.
- First trigger: Available for Continuous Mode only.
- Printing delay: 0-1000mm (Photoelectric Mode only).
- Printing speed: 20-1000mm/s.
- Repetition: Set the repeated printing counts for a single job, supporting 1-999999 times (available for Continuous Mode only).
- Printing Interval: Set the distance between prints, 80-1000mm (available for Continuous Mode only).

Ink Cartridge Parameter Settings



Print Heads Stitching Alignment

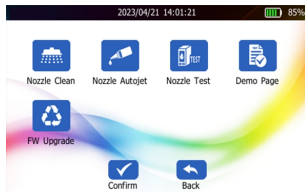
Nozzle 2



Nozzle 1

- Click Setting-Cartridge-Cartridge to realign and adjust the cartridge stitching
- For example, as shown on the above figure, the print outs of Print nozzle 2 is misplaced/ misaligned and offset to the right in about 1mm measuring by a caliper.
- To solve this problem, click Setting>Cartridge Settings>Cartridge . Click the Nozzle 2 left arrow, moving the value one unit to the left is equivalent to moving 0.1mm,here move the value 10 units (equals 1mm) to the left (276-266) will do.
- Up and down misalignment can be debugged in the same method.

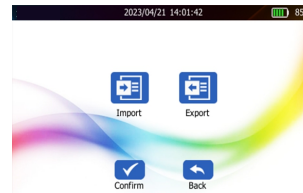
Device Maintenance



- Routine maintenance and system upgrades for the printer and cartridge.
- Nozzle cleaning: Clean the print nozzles if clogged.
- Nozzle moisturizing: Set this to jet little ink automatically to prevent the printer nozzles from drying when not in use.can set the moisturizing time, moisturizing level if needed.
- Nozzle test: Use the system test page to test and verify the printing effect.
- Demo page: Print the Demo page to test and verify the print effects.
- Firmware upgrade: Contact your printer local dealer to get the latest firmware, unzipped it and copy to the U-disk, insert it to your printer and then go to the Device Maintenance for firmware upgrade.

Note: Ensure that the printer remaining power is above 25% before firmware upgrade.In case it is insufficient, connect the charger during the upgrading process.Power off during the upgrade process may damage the printer.

U-Disk



- Machine-to-machine interaction of data.
 - Data, including print jobs, images , database, fonts and icons could be imported and exported.
- Note:Picture should be named by numbers and letters only.This printer can recognize BMP, JPG and PNG formats . Picture resolution is not allowed to exceed 566*12800 pixel (vertical * Horizontal).

Device Information



- Printer: View the printer model, serial number and firmware version.
- Ink cartridge: Check the print counts and ink droplets consumption of each cartridge.
- Battery: Check the battery status, remaining power and total charge times.
- Memory: Check the Memory size occupied and its specific file type size.

Troubleshooting

No.	Failures	Cause	Solutions
1	Failed to power on	Low or damaged battery	Recharge/Replace the battery
		Poor Battery Contact	Reinstall the battery
2	Failed to print	Incorrect ink cartridge installation	Reinstall the ink cartridge
		Ink cartridge depleted	Replace with a new ink cartridge
		Incorrect parameter settings	Restore factory settings
		Wrongly edited print content	Re-edit your print content
		Abnormal roller rolling	Clean debris on the roller gaps
3	Unclear Printing	Incorrect parameter settings	Restore factory settings
		Clogged ink nozzles	Clean the ink nozzles
		Ink cartridge depleted	Replace with a new ink cartridge
		Insufficient power	Recharge or replace the battery

Error messages shown on printer screen and Solutions

No.	Error Message	Error Message Code	Solutions
1	Ink cartridge not installed	NA	Reinstall the ink cartridge
2	Ink cartridge not recognized	03	Replace the cartridge or cartridge smart chip
3	Ink cartridge error	04/05/07/08	Replace the cartridge or cartridge smart chip
4	Ink cartridge error	06	Incorrect cartridge installed, replace with the correct cartridge model
5	Ink low	NA	Ink volume less than 5%
6	Ink finished	NA	Ink volume less than 20%

Packing List

NO.	Name	Quantity
1	Handheld Inkjet Printer	1 set
2	Genuine ink cartridge	2 pcs
3	User Manual	1 pcs
4	Certificate	1 sheet
5	USB flash drive or Photoelectric sensor	1 pcs
6	Positioning plate	1 pcs
7	Power adapter	1 pcs

Note: Optional accessories and components need to be purchased independently.

Warning

Replacing the battery with an incorrect type may bring the risk of fire, explosion, or damage to the device. Replace only with the same or equivalent battery type.

Throwing a battery into a fire, into a hot oven, mechanically crushing or cutting a battery can cause an explosion.

Batteries may be subjected to high or low temperature extremes or high altitude and low air pressure during use, storage or transportation.

Exposing the battery to extremely high temperature or low pressure may result in an explosion or leakage of flammable liquid or gas.



Warranty Instructions

Dear customer,

Thank you for purchasing our handheld/inline inkjet printer! To ensure the safe use of the product and your benefits and interests, please read the following content carefully, fill in and keep the warranty card properly.

This product is a precision instrument. In case of any abnormality, refer to this manual for troubleshooting or contact the customer service center of your seller.

Term of Service

1. This product is with a one-year warranty period. The starting date of the warranty period is subject to the date of the product invoice.
2. During the warranty period, if the product is under normal use and maintenance and failure is caused by the quality of the machine itself, the company will provide free repair and replacement parts.
3. Vulnerable parts are excluded, such as ink cartridges, screens, removable storage, switches, chargers, batteries, which shall not be covered by the warranty.

Disclaimer

Any of the following conditions shall not be covered by the warranty:

1. Damage due to improper transportation, use, storage, and maintenance, or man-made damage.
2. Unauthorized repair or the user installs, disassembles, and repairs the machine by himself.
3. Damages caused by using non-genuine consumables or accessories which are not provided by the company.
4. Missed or modified warranty card.
5. Beyond the warranty period.
6. Damage caused by force majeure.

Warranty Card

Product Related information

Customer Name: _____ Contact Phone: _____

Mailing Address: _____

Product Model: _____ Product ID: _____

Store Purchased: _____ Purchase Date: _____

Maintenance Store: _____ Invoice No.: _____

Maintenance Record

Date of Maintenance: _____

Failure Description: _____

Solution: _____

Maintained by: _____ Contact Phone: _____ Staff Signature: _____

Fill in this warranty card in time after purchasing this printer. Please keep the warranty card properly, and it is not required to send it back to the seller. Carry the warranty card and the original invoice for maintenance.

Zhuhai Bentsai Electronics Co.,Ltd.